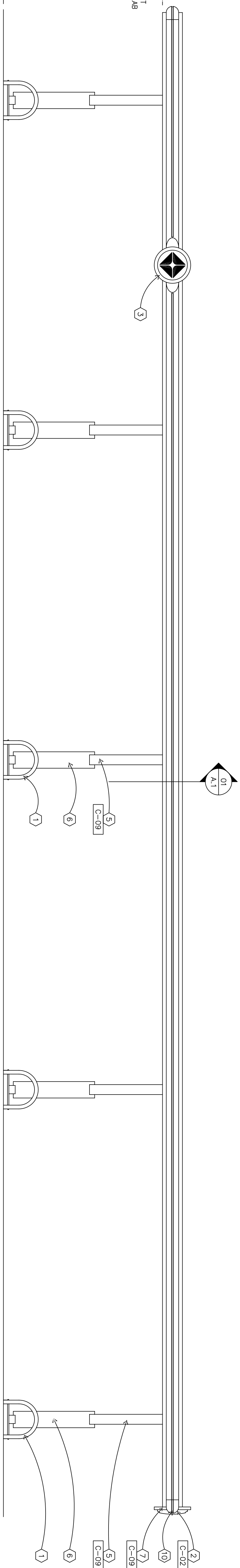
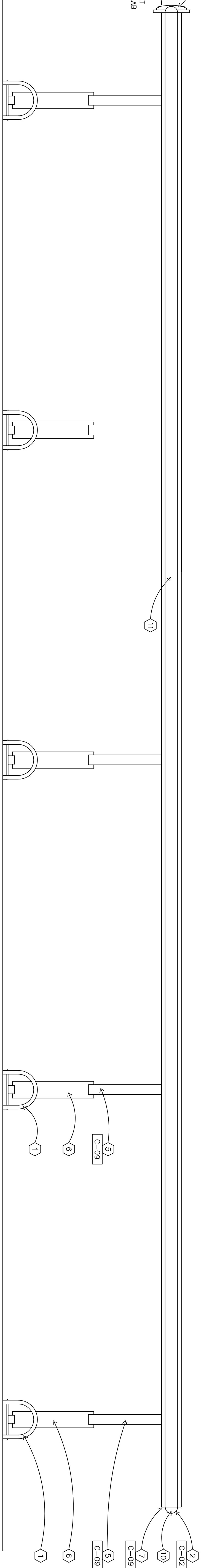


116'-0" *
B.O. FASCIA
* MINIMUM MOUNTING HEIGHT
ABOVE HIGH POINT OF SLAB

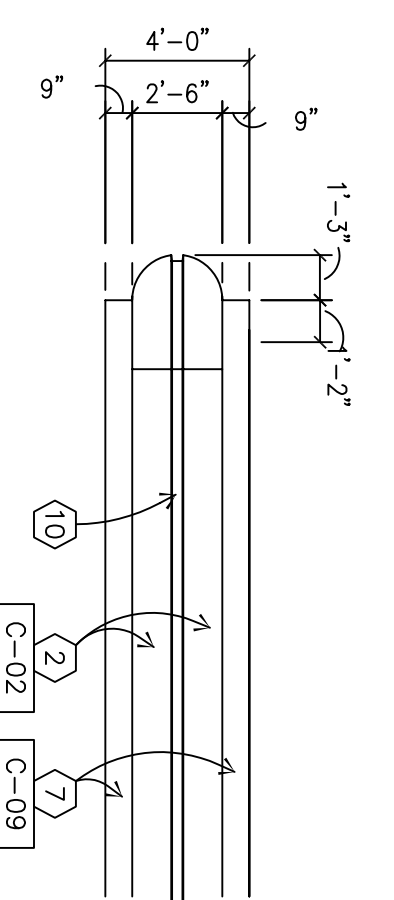


100'-0" *
TOP OF SLAB
FRONT ELEVATION
A2 SCALE: 3/16"=1'-0"

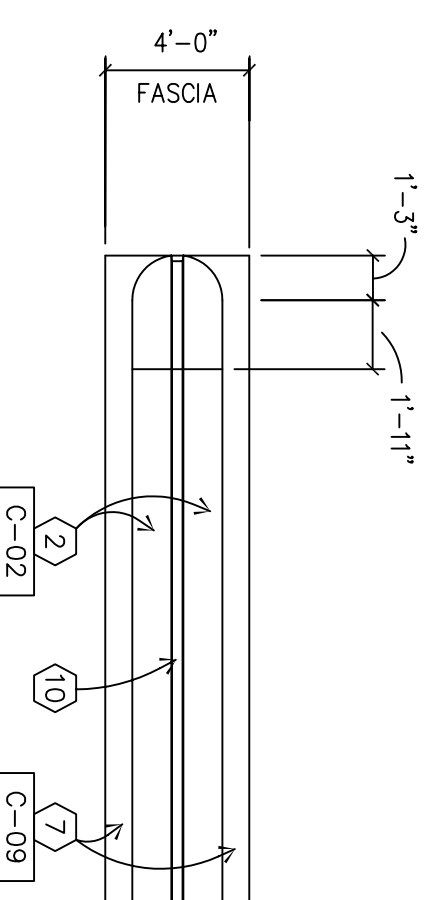
116'-0" *
B.O. FASCIA
* MINIMUM MOUNTING HEIGHT
ABOVE HIGH POINT OF SLAB



100'-0" *
TOP OF SLAB
REAR ELEVATION
A2 SCALE: 3/16"=1'-0"

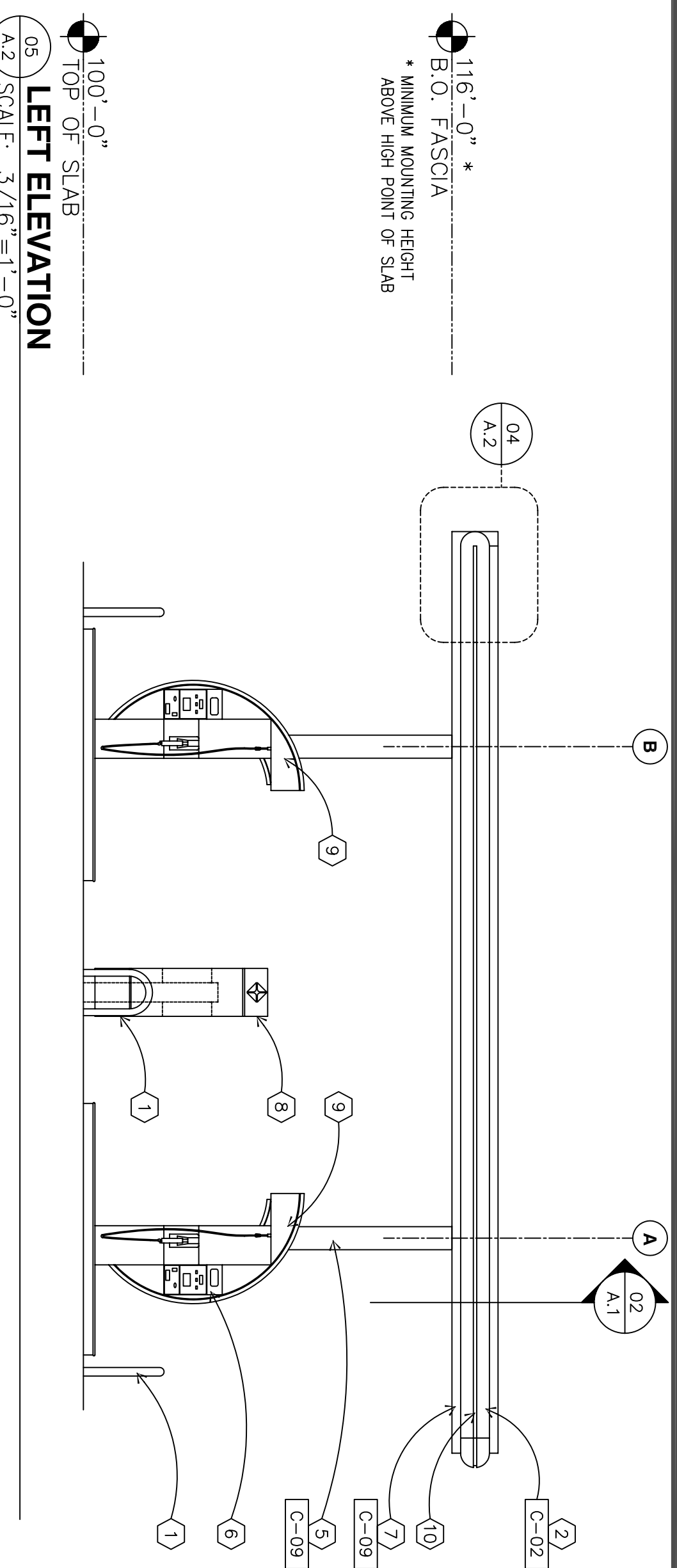


03 BULLNOSE DETAIL
A2 SCALE: 3/8"=1'-0"



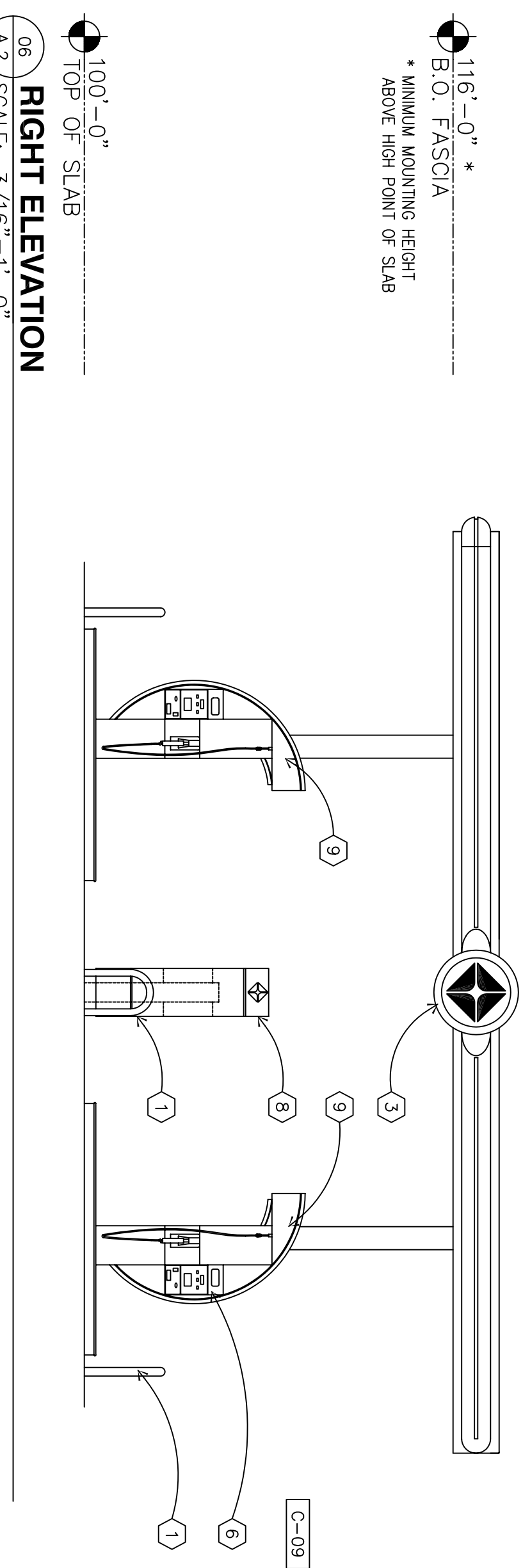
04 BULLNOSE DETAIL
A2 SCALE: 3/8"=1'-0"

116'-0" *
B.O. FASCIA
* MINIMUM MOUNTING HEIGHT
ABOVE HIGH POINT OF SLAB



05 LEFT ELEVATION
A2 SCALE: 3/16"=1'-0"

116'-0" *
B.O. FASCIA
* MINIMUM MOUNTING HEIGHT
ABOVE HIGH POINT OF SLAB



06 RIGHT ELEVATION
A2 SCALE: 3/16"=1'-0"

KEYED NOTES

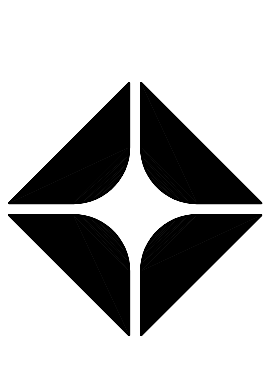
- 1 ARCHED BOLLARD
- 2 PLASTIC BULLNOSE FASCIA WITH REVEAL (BY OTHERS)
- 3 ILLUMINATED SIGN BOX (BY OTHERS) FIELD VERIFY LOCATION
- 4 STEEL BEAM, REFER TO STRUCTURAL
- 5 STEEL COLUMN, REFER TO STRUCTURAL
- 6 FUEL DISPENSER AND CURB (BY OTHERS)
- 7 ALUMINUM COMPOSITE MATERIAL FASCIA PANELS (BY OTHERS)
- 8 PIC UNIT (BY OTHERS)
- 9 4" x 6" HANDHOLE WITH COVERPLATE ON INSIDE FACE OF COLUMN (TR)
- 10 LED "LASER LIGHT" STRIP TO MATCH
- 11 VINYL DECAL APPLIED TO AIA PANEL

EXTERIOR PAINTS

- C-02 COLOR: ARCO BLUE
PMS 2896 - SATIN FINISH
- C-09 COLOR: PEARL
MATCH RAL 1013 - SEMI-GLOSS
- C-11 COLOR: ARCO LIGHT BLUE
PMS 29356 - SATIN FINISH



PRINCE REAL ESTATE HOLDINGS, INC.
RIVERSIDE COUNTY TRAVEL ZONE, LLC
COO & CO-OWNER



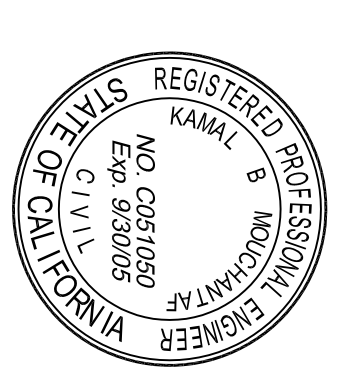
ARCO

BRAND: ARCO
BY WEST COAST PRODUCTS, LLC
CONSULTANT:



Engineering & Construction, Inc.
733 N. MAIN ST.
ORANGE, CA 92666
714/ 769-2000
714/ 769-2002 Fax
R.O. 3030 S. MAIN ST.
WWW.WESTSTATES.COM
A "Design/Build" Co.

NO.	DATE	REVISION DESCRIPTION
1	11-17-03	BUILDING SUBMITTAL
2	11-17-03	REVISION FOR PANEL DETAILS
3	11-17-03	REVISION FOR PANEL DETAILS
4	11-17-03	REVISION FOR PANEL DETAILS
5	11-17-03	REVISION FOR PANEL DETAILS
6	11-17-03	REVISION FOR PANEL DETAILS
7	11-17-03	REVISION FOR PANEL DETAILS
8	11-17-03	REVISION FOR PANEL DETAILS
9	11-17-03	REVISION FOR PANEL DETAILS
10	11-17-03	REVISION FOR PANEL DETAILS
11	11-17-03	REVISION FOR PANEL DETAILS



CONFERENTIALITY STATEMENTS:
THE SIGNATURE OF THIS ARCHITECTURAL DRAWING IS THE PROPERTY OF WESTERNSTATES ENGINEERING & CONSTRUCTION, INC. AND IS NOT TO BE REPRODUCED OR TRANSMITTED IN ANY FORM OR BY ANY MEANS, ELECTRONIC OR MECHANICAL, INCLUDING PHOTOCOPYING, RECORDING, OR BY ANY INFORMATION STORAGE AND RETRIEVAL SYSTEM, WITHOUT THE WRITTEN PERMISSION OF WESTERNSTATES ENGINEERING & CONSTRUCTION, INC. ANY UNAUTHORIZED REPRODUCTION OR TRANSMISSION OF THIS DRAWING IS STRICTLY PROHIBITED AND WILL BE PROSECUTED TO THE FULL EXTENT OF THE LAW.

DEVELOPMENT INFORMATION:
CANOPY
DOMINO 8
FLAT DECK

SITE ADDRESS:
23261 CALALCO EXWV.
8 HARVEY AVENUE
FERRIS, CALIFORNIA 92521

DESIGNED BY: HILLMAN ZANK
CHECKED BY: JIP REINE
DRAWN BY: ALLIANCE PM
PROJECT NO: E75403
VERSION:
DRAWING TITLE:
ELEVATIONS

SHEET NO:
DOFO
A.2