

SHEET NO. 3 OF 6 SHEETS	CALICO EXPRESSWAY MEDIUM LANDSCAPE PLANS COUNTY OF RIVERSIDE IP 040124 CUP 3370	OWNER: PINNACLE REAL ESTATE HOLDINGS, INC. 8300 UTICA AVE., 3RD FLOOR RANCHO CUCAMONGA, CA 91730 PHONE/FAX: (714) 538-5199	SCALE: N.T.S.	FOR: PINNACLE REAL ESTATE	COUNTY:
PREPARED BY: MICHA CABRO www.comworksdg.com Fax (951) 369-4039 (951) 369-0700		K.C.K. R.L.A. NO. 2110 EXP. DATE 10/31/07		RECOMMENDED BY: KHALED A. OTHMAN, P.E. R.C.E. 33960 EXP. 6-30-08 DATE	

SEAL - LANDSCAPE

SEAL - COUNTY

DATE	BY	MARK	ENGINEER

REVISIONS
 COUNTY
 APRJ DATE

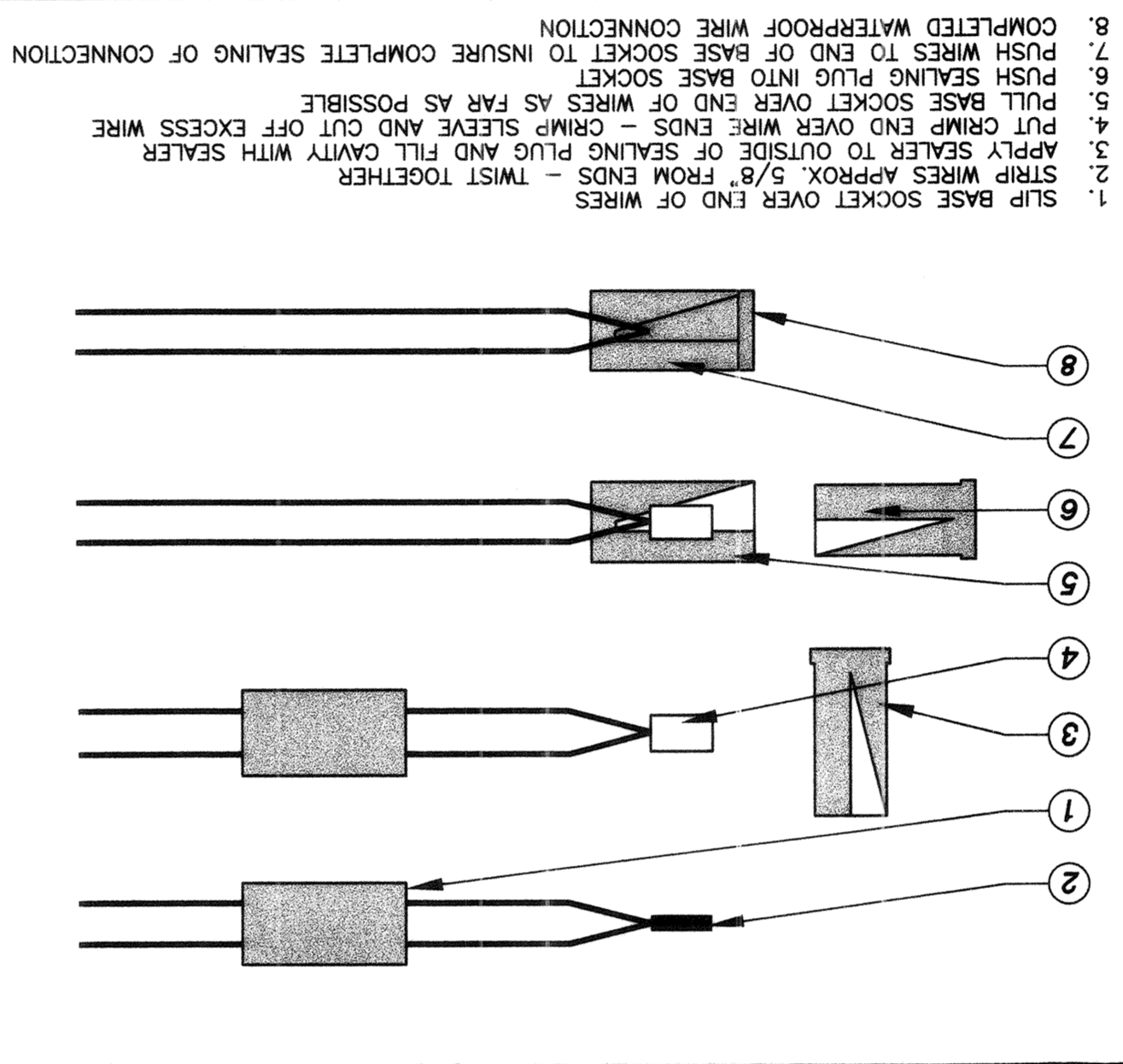
\$ CASH-IN-LIEU PAID FOR MEDIAN

THE PRIVATE ENGINEER SIGNING THESE PLANS IS RESPONSIBLE FOR GRADING PERMIT HAS BEEN ISSUED.
 SHALL NOT COMMENCE UNTIL AN ENCROACHMENT PERMIT AND/OR A GRADING PERMIT HAS BEEN ISSUED.
 WORK CONTAINED WITHIN THESE PLANS
 FOR DETERMINING AN ACCEPTABLE SOLUTION AND REVISIONS THE PLANS
 FOR APPROVAL BY THE COUNTY.

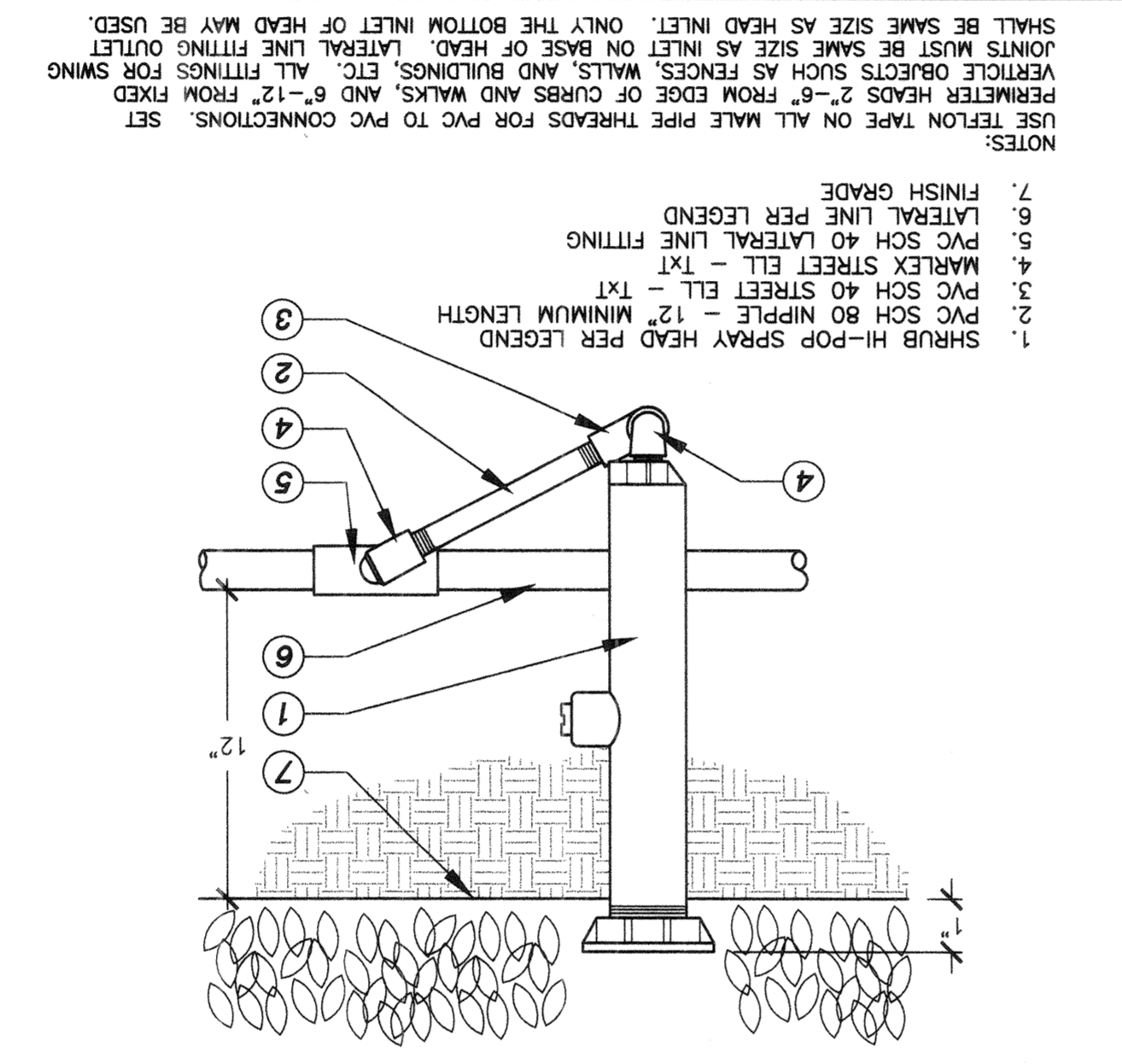
A Ball Valve



B Quick Coupler Valve



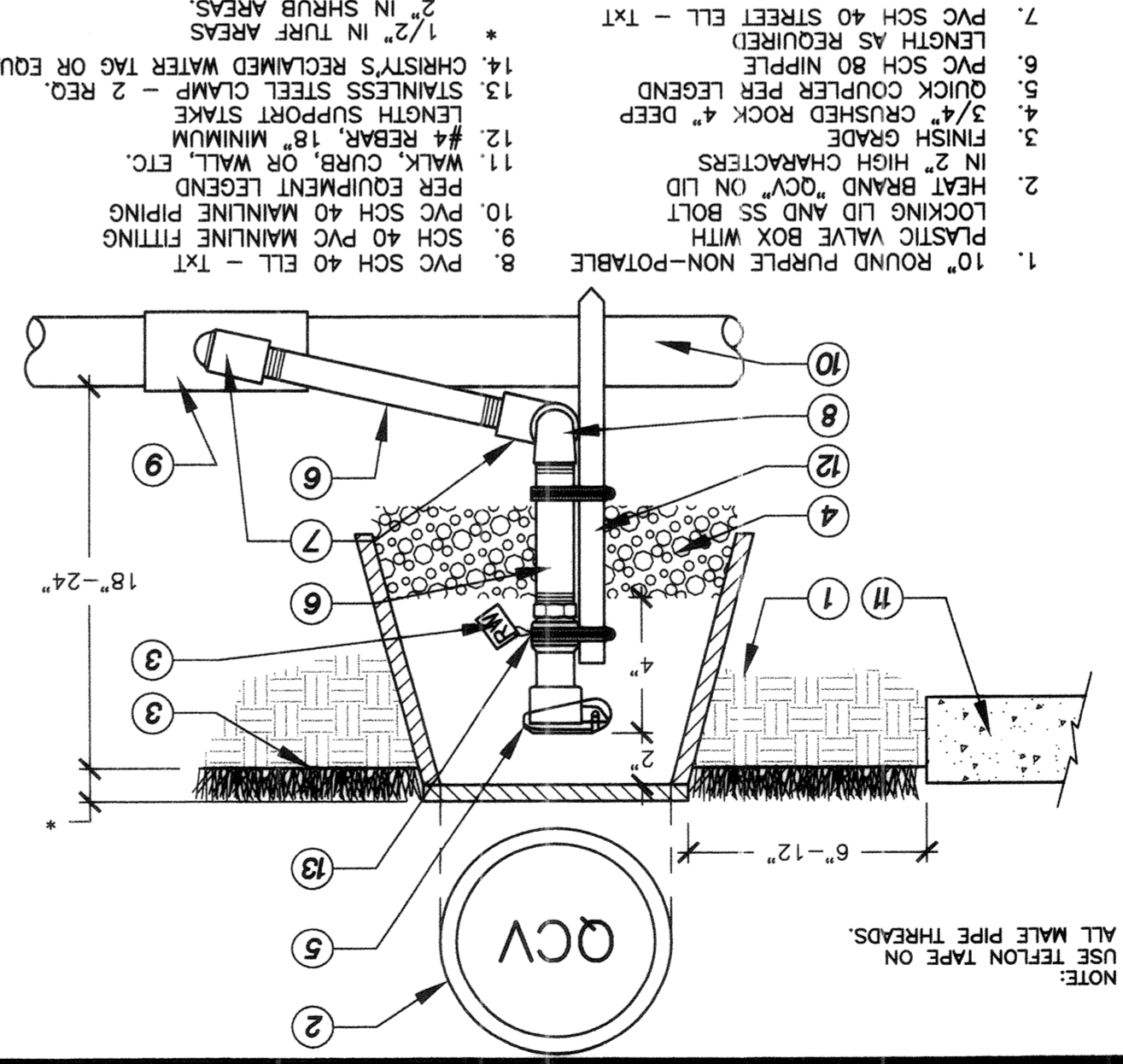
C Remote Control Valve



G HI-Pop Spray Head



F Wire Connections



D Trenching

