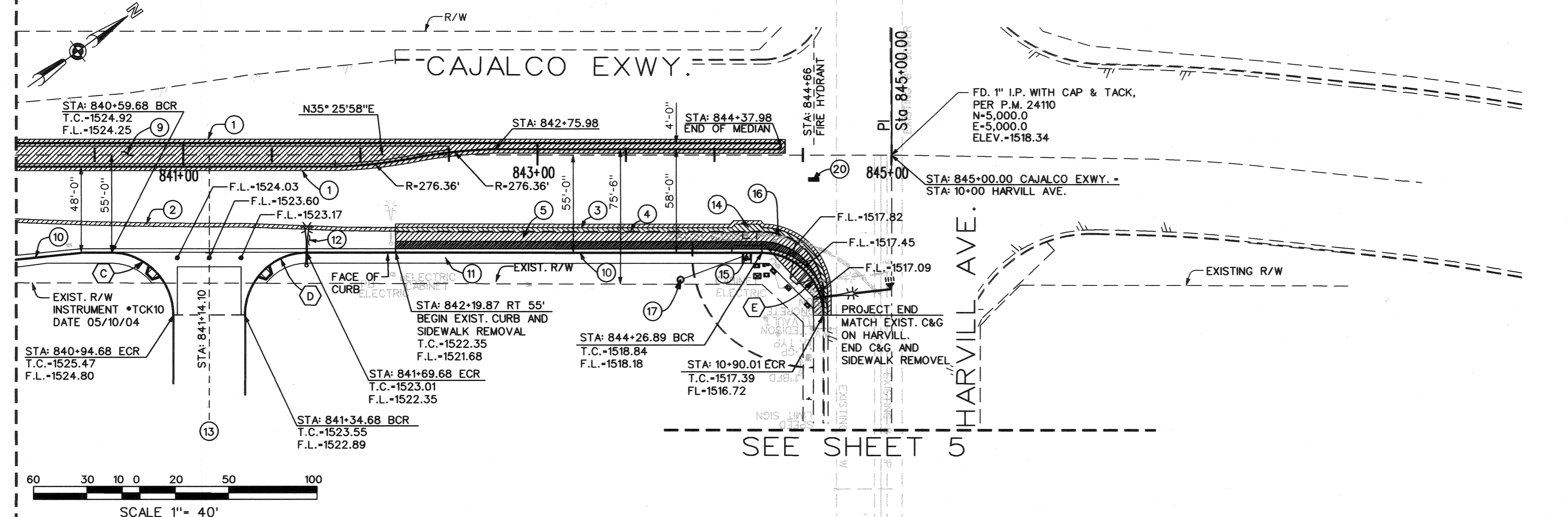
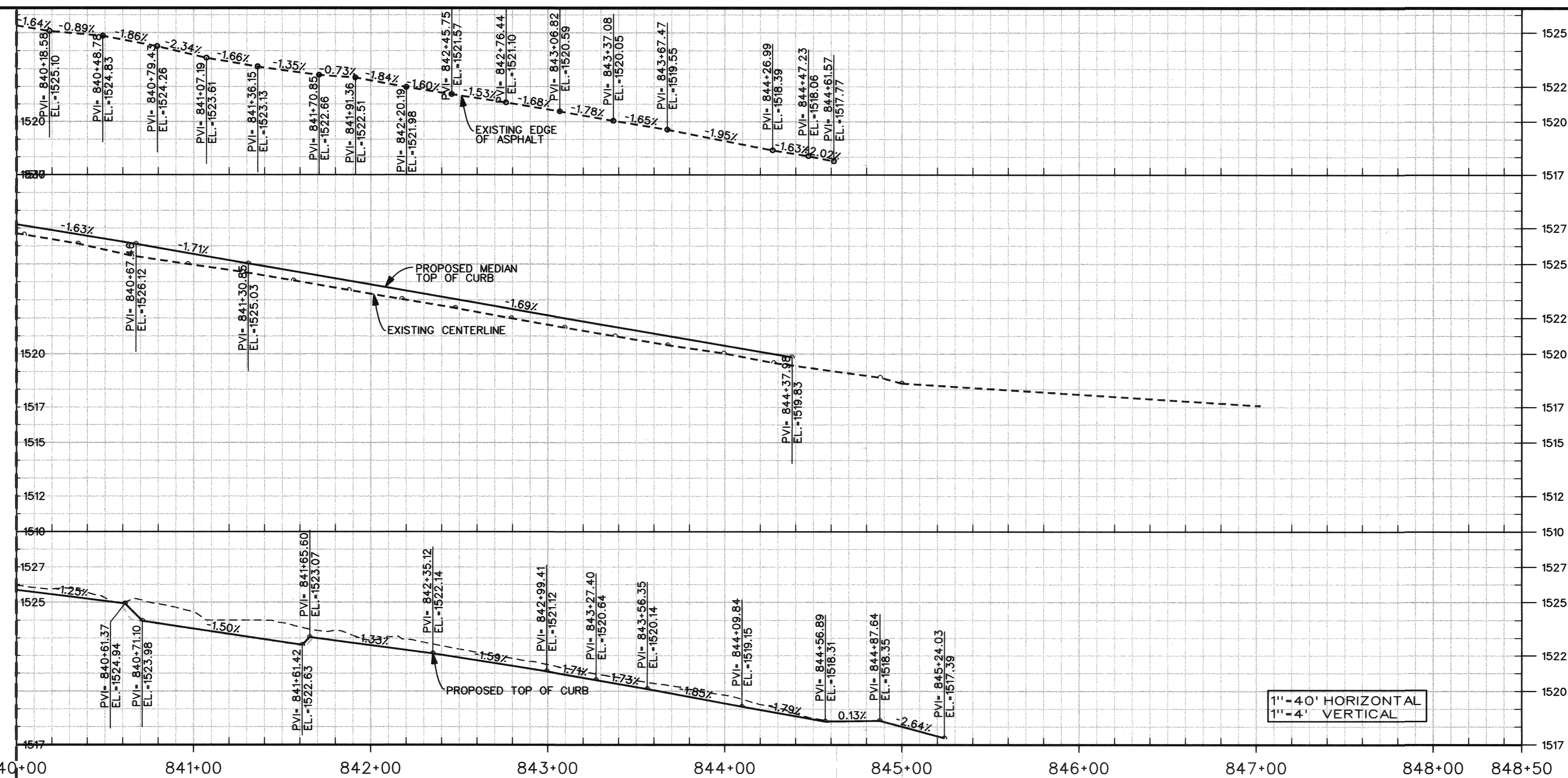


MATCH LINE STA 840+00 SEE SHEET 3



- ### CONSTRUCTION NOTES
- ① SAW CUT AND REMOVE ASPHALT ADJACENT TO PROPOSED MEDIAN.
 - ② SAW CUT AND REMOVE ASPHALT ALONG EXISTING EDGE OF PAVEMENT.
 - ③ SAW CUT AND REMOVE ASPHALT ALONG EXISTING EDGE OF CURB AND GUTTER.
 - ④ REMOVE AND DISPOSE OF CURB AND GUTTER.
 - ⑤ REMOVE AND DISPOSE OF SIDEWALK.
 - ⑥ ADJUST RIM ELEVATION TO MATCH PROPOSED TOP OF ASPHALT.
 - ⑦ REMOVE AND DISPOSE EXISTING DRIVEWAY.
 - ⑧ REMOVE AND DISPOSE TREES.
 - ⑨ CONSTRUCT LANDSCAPE MEDIAN PER COUNTY OF RIVERSIDE STD. NO. 113 AND DETAIL IN SHEET 2.
 - ⑩ CONSTRUCT CURB AND GUTTER A-8 PER RIVERSIDE COUNTY STD. NO. 201
 - ⑪ CONSTRUCT 6" SIDEWALK ACCORDING TO SHEET 2.
 - ⑫ PLACE 3" ASPHALT PAVEMENT OVER 1" CLASS II AGGREGATE BASE OVER EXISTING GROUND AT 95% RELATIVE COMPACTION.
 - ⑬ CONSTRUCT DRIVEWAY ACCORDING TO RIVERSIDE COUNTY STD. 207A INCLUDING CROSS GUTTER LAYOUT PER STD. NO. 209. SEE CURB DATA TABLE IN THIS SHEET.
 - ⑭ REMOVE AND DISPOSE EXISTING CATCH BASIN. SEE STORM DRAINAGE PLAN FOR NEW CATCH BASIN LOCATION AND CONNECTION TO EXISTING DRAINAGE.
 - ⑮ CONSTRUCT CATCH BASIN PER RIVERSIDE COUNTY STD. 300 AND STORM DRAIN PLANS. CONNECT TO EXISTING PIPE.
 - ⑯ CONNECT PROPOSED 18" RCP TO EXISTING 18" RCP. USE CONCRETE COLLAR PER RIVERSIDE COUNTY FLOOD CONTROL STANDARD NO M 803.
 - ⑰ INSTALL PRE-CAST CONCRETE MANHOLE PER RIVERSIDE COUNTY STD. NO. 607.
 - ⑱ ~~CONNECT PROPOSED 24" RCP TO EXISTING 84" RCP. USE APWA JUNCTION STRUCTURE STD. PLAN 3312.~~
 - ⑲ ~~INSTALL FIRE HYDRANT ASSEMBLY PER RIVERSIDE COUNTY ROAD IMPROVEMENT STANDARD AND SPECIFICATIONS STD. NO. 701.~~
 - ⑳ ~~INSTALL BLUE RETROREFLECTIVE FIRE HYDRANT PAVEMENT MARKERS PER MUTCD 2003, FIGURE 3B-102.~~
 - ㉑ ~~PROTECT IN PLACE EXIST. FIRE HYDRANT.~~
 - ㉒ ~~PROTECT IN PLACE EXIST. WATER METER, WATER VALVE.~~
 - ㉓ ~~REMOVE AND DISPOSE EXIST. FIRE HYDRANT.~~
 - ㉔ ~~CONNECT SEWER SERVICE TO EXISTING HOUSE LATERAL.~~

- ### GENERAL NOTES
1. SEE STRIPING PLANS
 2. SEE STREET LIGHTING PLANS
 3. CONSTRUCTION NOTES WITH STRIKE THROUGH DO NOT APPLY TO THIS SHEET.

RETURN CURB DATA				
DESC.	RADIUS	LENGTH	TANGENT	DELTA
A	6.0'	6.28'	3.47'	43° 0' 0"
B	40.0'	62.83'	40.0'	90° 0' 0"
C	35.0'	54.98'	35.0'	90° 0' 0"
D	35.0'	54.98'	35.0'	90° 0' 0"
E	35.0'	55.0'	35.0'	89° 53' 50"

NOTE: WORK CONTAINED WITHIN THESE PLANS SHALL NOT COMMENCE UNTIL AN ENCROACHMENT PERMIT AND/OR A GRADING PERMIT HAS BEEN ISSUED.

THE PRIVATE ENGINEER SIGNING THESE PLANS IS RESPONSIBLE FOR ASSURING THE ACCURACY AND ACCEPTABILITY OF THE DESIGN HEREON IN THE EVENT OF DISCREPANCIES ARISING AFTER COUNTY APPROVAL OR DURING CONSTRUCTION. THE PRIVATE ENGINEER SHALL BE RESPONSIBLE FOR DETERMINING AN ACCEPTABLE SOLUTION AND REVISING THE PLANS FOR APPROVAL BY THE COUNTY.

DATE	BY	MARK	APPR	DATE

SEAL-COUNTY

COUNTY OF RIVERSIDE
DEPARTMENT OF TRANSPORTATION
APPROVED BY:

[Signature] 6/29/06
KWALED K. OTTMAN, P.E.
CIVIL ENGINEER, R.C.E. NO. 33950

RECOMMENDED DATE

SEAL-ENGINEER

WILSON & COMPANY
275 W. HOSPITALITY LANE STE.
300 SAN BERNARDINO,
CALIFORNIA 92408 PHONE: (909)
806-8000 FAX: (909) 806-8099

PREPARED BY: DATE

BENCHMARK: NUMBER: 20469 AGENCY: CAL-TRANS ELEVATION: 1498.87 FEET DATUM: SEA LEVEL DATUM OF 1929 DESCRIPTION: CDH BRASS DISK LOCATION: IN CONCRETE, 4.5' WEST OF WEST R/W FENCE, 23.5' EAST OF EAST RAIL BUR, 0.7' 0.19 MI SOUTH OF RAMONA EXPRESSWAY

CUP3370 I.P. No. 040124 COUNTY OF RIVERSIDE

STREET IMPROVEMENT PLANS CAJALCO EXPRESSWAY PLAN AND PROFILE 2 OF 2

FOR: W.O. COUNTY FILE NO.:

SHEET NO. 4 OF 8 SHTS.

SCALE: 1" = 40' HORIZONTAL 1" = 4" VERTICAL