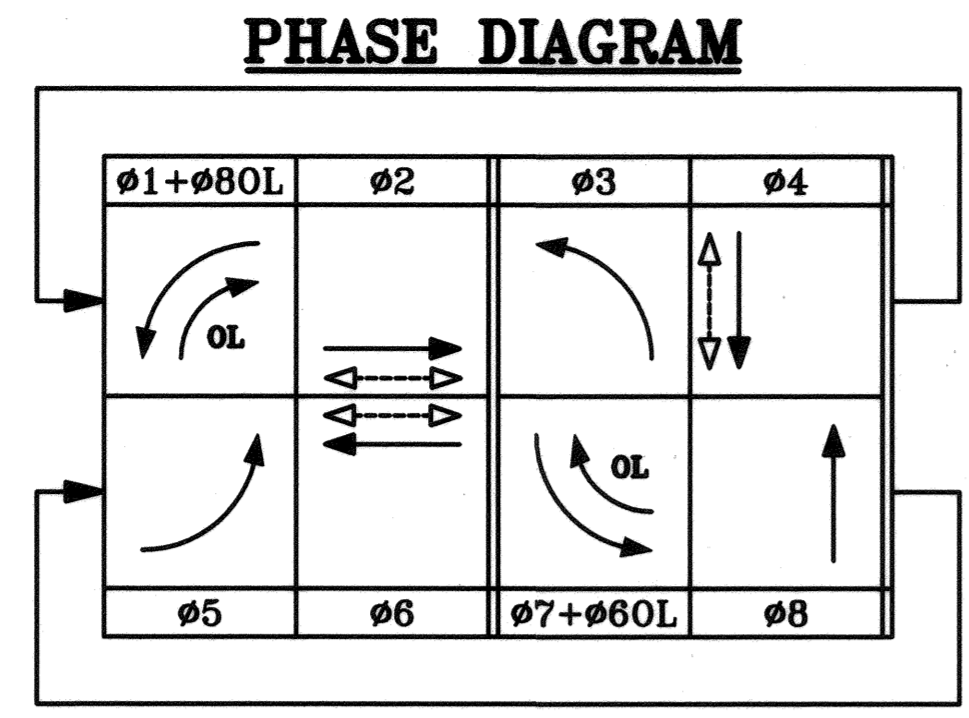


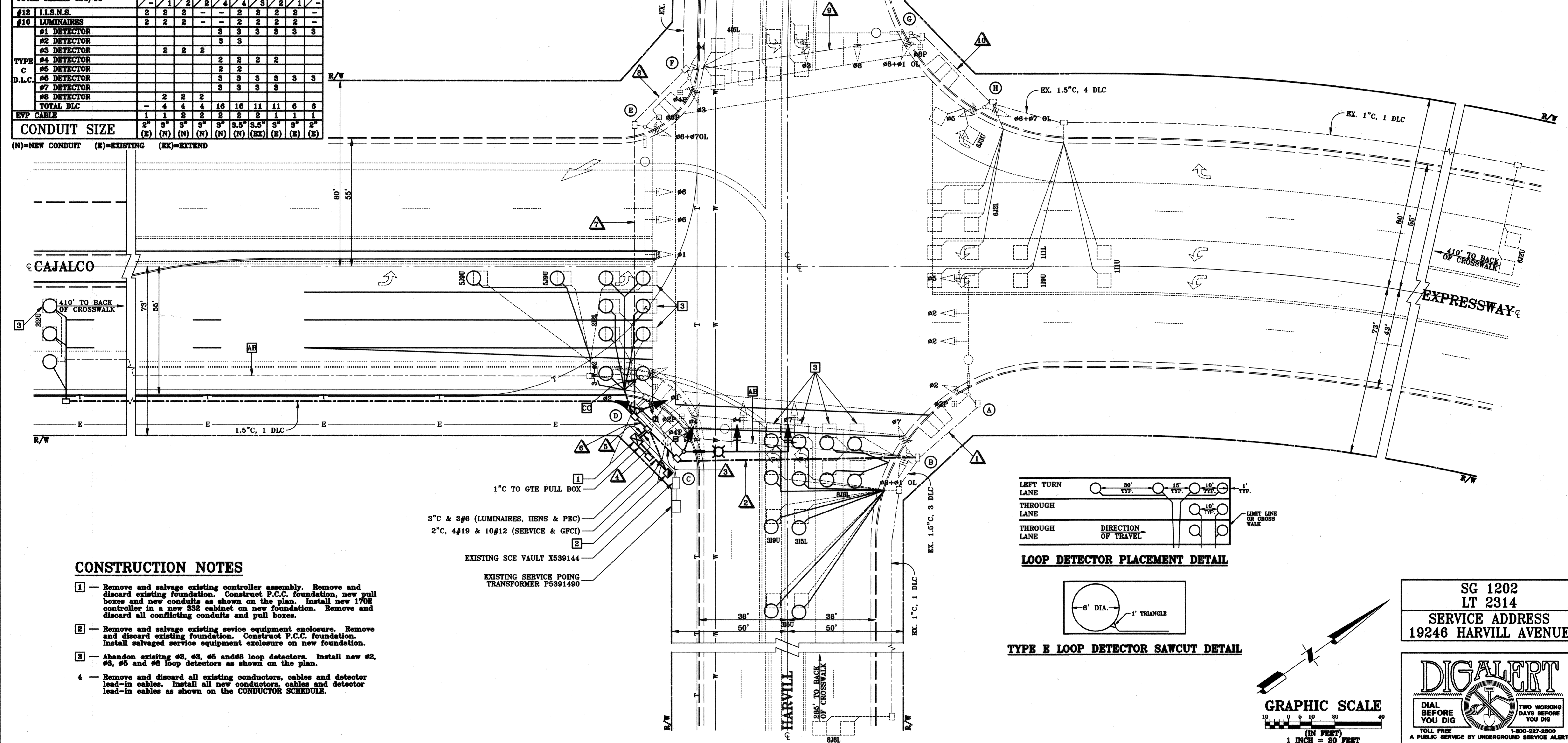
A.W.G. SIZE OR CABLE SIZE		POLE OR CIRCUIT RUNS											
		1	2	3	4	5	6	7	8	9	10	11	12
12 CONDUCTORS	POLE (A)	1	1	1	1								
	POLE (B)		1	1	1	1							
	POLE (C)			1	1	1	1						
	POLE (D)				1	1	1	1					
	POLE (E)					1	1	1	1				
	POLE (F)						1	1	1	1			
	POLE (G)							1	1	1	1		
	POLE (H)								1	1	1	1	
TOTAL CABLES 12C/3C		1	2	3	3	5	5	4	3	2	1	-	-
#12	L.I.S.N.S.	2	2	2	-	-	2	2	2	2	2	-	-
#10	LUMINAIRES	2	2	2	-	-	2	2	2	2	-	-	-
TYPE C D.L.C.	#1 DETECTOR					3	3	3	3	3	3		
	#2 DETECTOR					3	3						
	#3 DETECTOR		2	2	2								
	#4 DETECTOR					2	2	2	2				
	#5 DETECTOR					2	2						
	#6 DETECTOR					3	3	3	3	3	3		
	#7 DETECTOR					3	3	3	3				
	#8 DETECTOR		2	2	2								
TOTAL DLC		-	4	4	4	16	16	11	11	6	6	-	-
EVP CABLE		1	1	2	2	2	2	2	1	1	1	-	-
CONDUIT SIZE		2"	3"	3"	3"	3"	3.5"	3.5"	3"	3"	2"	-	-
		(E)	(N)	(N)	(N)	(N)	(N)	(EX)	(E)	(E)	(E)	-	-

(N)=NEW CONDUIT (E)=EXISTING (EX)=EXTEND



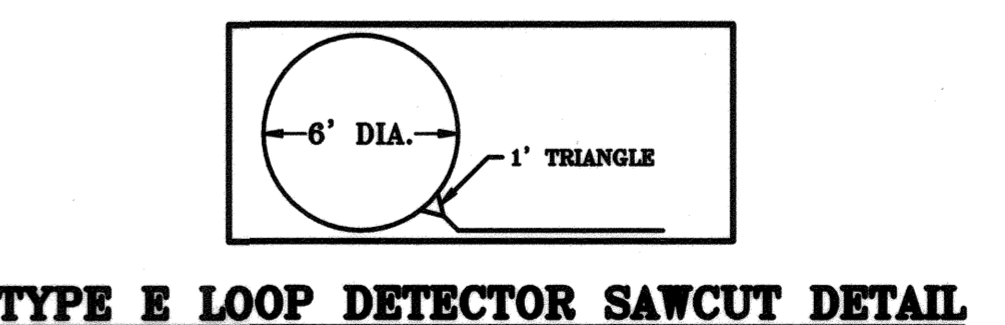
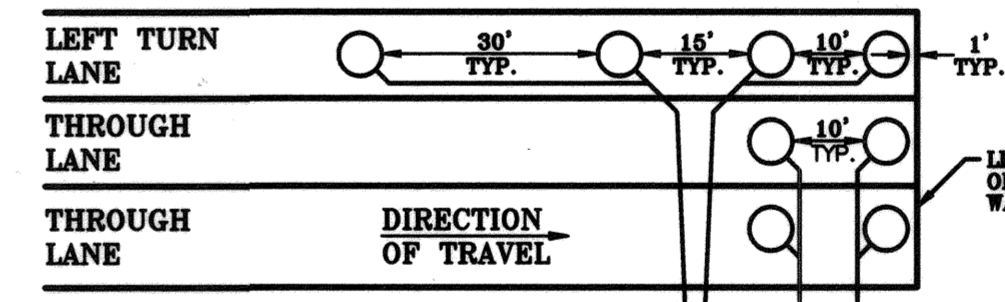
POLE AND EQUIPMENT SCHEDULE													
POLE NO.	DESCRIPTION	SIGNAL STANDARD			PLACEMENT DIMENSIONS		SIGNAL MOUNTING			PED PUSH BUTTONS		HPSV LUMINAIRE	L.I.S.N.S. LEGEND
		POLE HEIGHT	SIGNAL MAST ARM	LUMINAIRE MAST ARM	"A"	"B"	POLE VEHICLE	MAST ARM	POLE PEDESTRIAN	Ø	ARROW		
(A)	20-5-80	30'	50'	15'	EXIST	EXIST	SV-1-T	3-MAS	SP-1-T	-	-	250 W	Harvill
(B)	1-A	10'	-	-	EXIST	EXIST	TV-2-T	-	-	2	→	NW	-
(C)	20-4-80	30'	45'	15'	16'	4.0'	SV-1-T	2-MAS	SP-1-T	2	→	NW	250 W Cajalco Expwy
(D)	1-A	10'	-	-	16'	4.0'	TV-2-T	-	SP-1-T	4	→	NE	-
(E)	20-5-80	30'	55'	15'	EXIST	EXIST	SV-1-T	2-MAS	SP-1-T	4	→	ME	250 W Harvill
(F)	1-A	10'	-	-	EXIST	EXIST	TV-2-T	-	SP-1-T	6	→	SE	-
(G)	20-4-80	30'	45'	15'	EXIST	EXIST	SV-1-T	2-MAS	-	6	→	SE	250 W Cajalco Expwy
(H)	1-A	10'	-	-	EXIST	EXIST	TV-2-T	-	SP-1-T	-	-	-	-

NOTE: Remove and salvage existing POLE (C) and POLE (D). Remove existing foundations and anchor bolts. Backfill remaining holes with compacted Class II Aggregate Base and construct pavement and curb and gutter per street improvement plans. Construct new foundations for POLE (C) and POLE (D) as shown on the plan. Install salvaged POLE (C) and POLE (D) on new foundation.

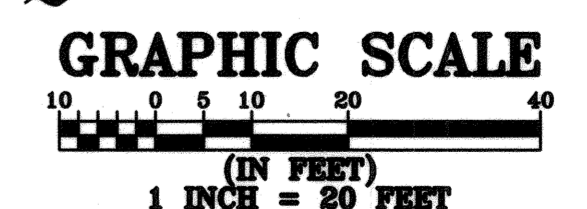


**CONSTRUCTION NOTES**

- 1 - Remove and salvage existing controller assembly. Remove and discard existing foundation. Construct P.C.C. foundation, new pull boxes and new conduits as shown on the plan. Install new 1700 controller in a new 332 cabinet on new foundation. Remove and discard all conflicting conduits and pull boxes.
- 2 - Remove and salvage existing service equipment enclosure. Remove and discard existing foundation. Construct P.C.C. foundation. Install salvaged service equipment enclosure on new foundation.
- 3 - Abandon existing #2, #3, #5 and #8 loop detectors. Install new #2, #3, #5 and #8 loop detectors as shown on the plan.
- 4 - Remove and discard all existing conductors, cables and detector lead-in cables. Install all new conductors, cables and detector lead-in cables as shown on the CONDUCTOR SCHEDULE.



SG 1202  
LT 2314  
SERVICE ADDRESS  
19246 HARVILL AVENUE



**DIGALERT**  
DIAL BEFORE YOU DIG  
TWO WORKING DAYS BEFORE YOU DIG  
TOLL FREE 1-800-227-2800  
A PUBLIC SERVICE BY UNDERGROUND SERVICE ALERT

NOTE: WORK CONTAINED WITHIN THIS PLAN SHALL NOT COMMENCE UNTIL AN ENCROACHMENT PERMIT AND/OR A GRADING PERMIT HAS BEEN ISSUED.

THE PRIVATE ENGINEER SIGNING THESE PLANS IS RESPONSIBLE FOR ASSURING THE ACCURACY AND ACCEPTABILITY OF THE DESIGN HEREON. IN THE EVENT OF DISCREPANCIES ARISING AFTER COUNTY APPROVAL OR DURING CONSTRUCTION, THE PRIVATE ENGINEER SHALL BE RESPONSIBLE FOR DETERMINING AN ACCEPTABLE SOLUTION AND REVISING THE PLANS FOR APPROVAL BY THE COUNTY.

MARK	BY	DATE

ENGINEER

SEAL-COUNTY  
COUNTY OF RIVERSIDE  
**TRANSPORTATION DEPARTMENT**  
APPROVED BY:  
*Khaled A. Othman* 6/23/06  
KHALED A. OTHMAN RCE 33960 DATE  
*Lawrence S. Eisenhart* 5/23/06  
RECOMMENDED DATE

SEAL-ENGINEER  
LAWRENCE S. EISENHART  
CONSULTING ENGINEER  
2070 Locust Court  
San Bernardino, California 92404  
Tel: (909) 864-5406 Fax: (909) 864-5047  
*Lawrence S. Eisenhart* 11/1/05  
LAWRENCE S. EISENHART RCE 13493 DATE

C.U.P. 3370 I.P.# 040124  
**COUNTY OF RIVERSIDE**  
CAJALCO EXPRESSWAY AND HARVILL AVENUE  
**SIGNAL MODIFICATION PLAN**  
FOR PINNACLE REAL ESTATE HOLDING, INC. W.O. 06-12 COUNTY FILE NO.  
SHEET NO. 2 OF 2 SHEETS