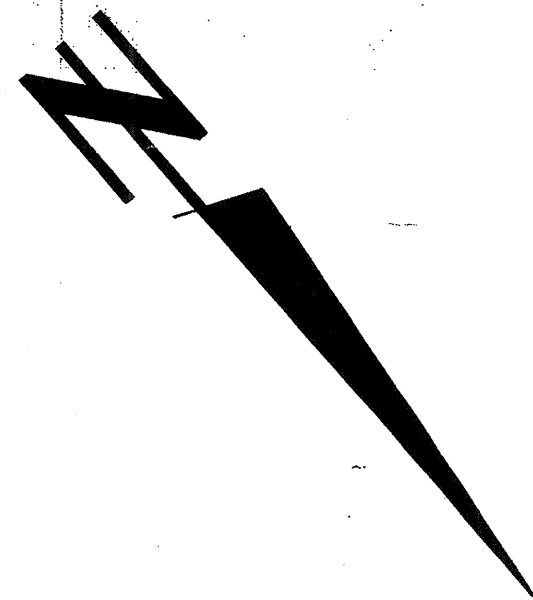
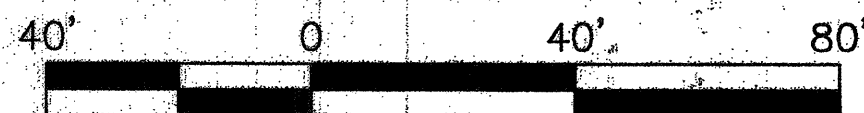


CONSTRUCTION NOTES:

- ① CONSTRUCT 1-1/2" COPPER WATER PIPE (DOMESTIC)
- ② CONNECT TO (E) 1-1/2" WATER METER
- ③ CONSTRUCT NEW 1-1/2" WATER SERVICE LATERAL WITH 1-1/2" WATER METER PER EMWD STD. DWG. B-342A
- ④ CONSTRUCT WET BARREL SUPER FIRE HYDRANT (6"x4"x2-1/2"x2-1/2") PER EMWD STD. DWG. B-362 WITH BLUE RETROREFLECTIVE MARKER IN PAVEMENT.
- ⑤ CONSTRUCT 8" CL. 150 AMNA C900 PVC PIPE
- ⑥ CONSTRUCT 8" DOUBLE CHECK DETECTOR ASSEMBLY PER EMWD STD. DWG. B-657 WITH TAMPER SWITCH.
- ⑦ 6" SPRINKLER LATERAL (CL.150, C900 PVC PIPE) -
- ⑧ CONSTRUCT 8" STEEL CML/CMG FIRE LATERAL
- ⑨ CONSTRUCT 6" ABS SEWER PIPE
- ⑩ CONSTRUCT SEWER CLEANOUT
- ⑪ CONSTRUCT 48" P.C.C. SEWER MANHOLE PER EMWD STD. DWG. S.B. 53
- ⑫ (PIV) POST INDICATOR VALVE WITH TAMPER SWITCH
- ⑬ (FDC) FIRE DEPARTMENT CONNECTION
- ⑭ CONSTRUCT CONCRETE THRUST PROTECTION PER EMWD STD. DWG. B-407

SCALE: 1" = 40'



CIVIL ENGINEERS CERTIFICATION

I CERTIFY THAT THE DESIGN OF THE WATER SYSTEM IS IN ACCORDANCE WITH REQUIREMENTS PRESCRIBED BY THE RIVERSIDE COUNTY FIRE DEPARTMENT.

Gil Mendoza 2/6/05
GIL MENDOZA P.E. #C53454 DATE

RIVERSIDE COUNTY FIRE DEPT. APPROVAL

APPROVED BY THE RIVERSIDE COUNTY FIRE DEPT.

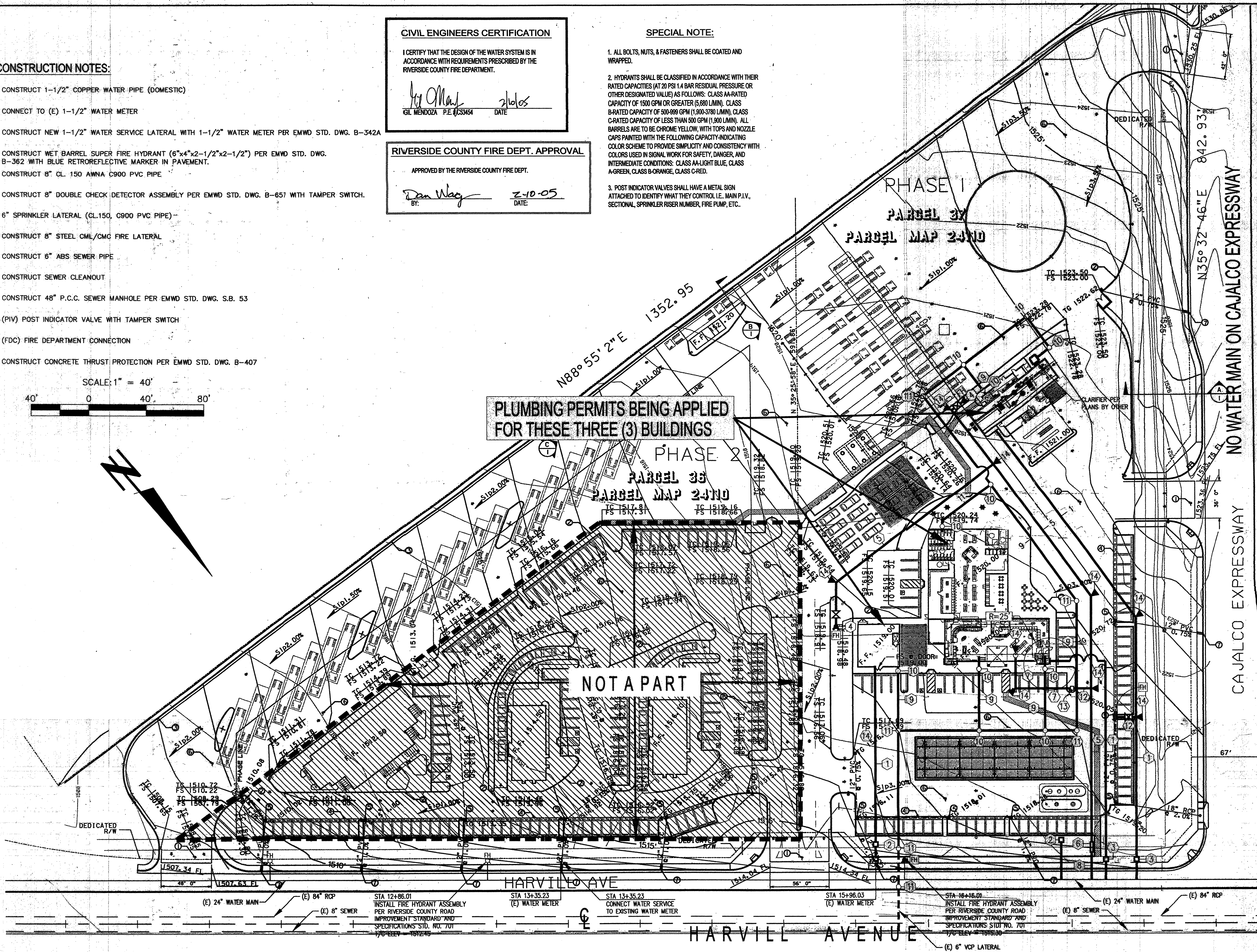
Dan Nag 2-10-05
BY: DAN NAG DATE

SPECIAL NOTE:

1. ALL BOLTS, NUTS, & FASTENERS SHALL BE COATED AND WRAPPED.
2. HYDRANTS SHALL BE CLASSIFIED IN ACCORDANCE WITH THEIR RATED CAPACITIES (AT 20 PSI 1.4 BAR RESIDUAL PRESSURE OR OTHER DESIGNATED VALUE) AS FOLLOWS: CLASS A-RATED CAPACITY OF 1500 GPM OR GREATER (5,680 L/MIN). CLASS B-RATED CAPACITY OF 500-999 GPM (1,900-3,780 L/MIN). CLASS C-RATED CAPACITY OF LESS THAN 500 GPM (1,900 L/MIN). ALL BARRELS ARE TO BE CHROME YELLOW, WITH TOPS AND NOZZLE CAPS PAINTED WITH THE FOLLOWING CAPACITY-INDICATING COLOR SCHEME TO PROVIDE SIMPLICITY AND CONSISTENCY WITH COLORS USED IN SIGNAL WORK FOR SAFETY, DANGER, AND INTERMEDIATE CONDITIONS: CLASS A-LIGHT BLUE, CLASS A-GREEN, CLASS B-ORANGE, CLASS C-RED.
3. POST INDICATOR VALVES SHALL HAVE A METAL SIGN ATTACHED TO IDENTIFY WHAT THEY CONTROL I.E. MAIN P.I.V., SECTIONAL, SPRINKLER RISER NUMBER, FIRE PUMP, ETC.

PLUMBING PERMITS BEING APPLIED FOR THESE THREE (3) BUILDINGS

NOT A PART



CAJALCO EXPRESSWAY NO WATER MAIN ON CAJALCO EXPRESSWAY

DATE	DATE	DATE	DATE	DATE	DATE
DESCRIPTION	REVISIONS:				
ARCHITECT:					
WESTERN STATES ENGINEERING & CONSTRUCTION, INC. 733 N. MAIN STREET ORANGE, CA 92668 PH: 714-768-2000 FAX: 714-714-2002					
CIVIL ENGINEER:					
RON MARTIN AND ASSOC., INC. 1600 LINE STREET, STE. #322 RIVERSIDE, CA 92507 951-786-0004 FAX 951-786-0005 E-MAIL: INFO@RNA-ENG.COM GIL MENDOZA PCE 55454 2/10/05					
PROJECT:					
RIVERSIDE COUNTY TRAVEL ZONE DEVELOPER: RIVERSIDE COUNTY TRAVEL ZONE, LLC 200 SOUTH CHURCH STREET ORANGE, CA 92668 PH: (714) 538-9199 FAX: (714) 715-1885					
Drawn	DNF	Checked	GFM	Engineer	GFM
File	200501UTP	Date	02/10/05		
Job No. 2005-0200					
Sheet No. 1-OF-2					